



CHILLIWACK RIVER VALLEY WATERSHED STRATEGY

Meeting Minutes

Date: February 14th, 2005 1:00 p.m.
Location: Fraser Valley Regional District, Cheam Boardroom

Facilitator: Doug Wilson, Fraser Valley Regional District

Present: Tom Cadieux, Fisheries and Oceans Canada
Len Leroux, Ministry of Forests
Graham Daneluz, Fraser Valley Regional District
Meeri Durand, Fraser Valley Regional District
Mark Johnson, Fisheries and Oceans Canada
Dave Lamson, Chilliwack River Action Committee
Sylvia Letay, Ministry of Water, Land and Air Protection
Frank Sobkowich, Electoral Area E Director
Nelson Kahama, Soowahlie First Nation
Barry Eastman, Ministry of Transportation and Highways

The Meeting Commenced at 1:15 p.m.

1.0 Introductions and Roundtable

Doug Wilson introduced himself as the facilitator for the meeting and a roundtable of introductions took place.

2.0 Update on the Tolmie Clay Slide (David Lamson)

Images of the clay slide before and after the slump that occurred on January 7th were distributed to the group.

- Chilliwack River Action Committee (CRAC) received funding to stabilize the slide area under a 3-year permit
- Golder Associates engineered the project and the engineering concept is considered relatively new for a river of this size. They have been used elsewhere on smaller systems
- 4 groynes were built during the first year and an additional 12 the following year adding up to a total of 16 built along the bottom edge of the slope

- The design concept places the groynes in 20 meter intervals and the structures cause the water to rise over the groynes and deflect, preventing undercutting of the banks
- The groynes are also useful for providing rest areas for fish and shade
- The 16 groynes built did not cover the full extent needed to prevent the slump on January 7th
- The slump resulted in a loss of approximately 15,000 cubic meters of material that fell across 2/3rds of the channel with evidence of ponding
- ½ of the bank is still unstable and small amounts of material are being lost as rain and frost and thaw events cause further destabilization
- Signage was requested to warn recreational users and residents and a volunteer group provided the signs as an in-kind contribution
- Groynes 15 and 16 were carried by the slide and unexpectedly held the material from causing major sediment loads from entering the channel
- Boulders were donated by the Ministry of Transportation and Highways
- The slide is on land administered by Land and Water BC – liability issue was flagged
- At the Slesse slide the Province was reluctant to put up signs (when the agency was still Ministry of the Environment)
- Tolmie's have removed trees and old vehicles from the top ridge of the slide – tree movement caused by wind results in further destabilization of the slide area by acting as mini-earthquakes
- The use of groynes as opposed to use of dikes has been deemed successful
- The same concept has been used on the Columbia River, Coquihalla and Wilson Road
- The use of groynes has to consider bed load, as erosion can occur downstream – may have to be designed to head upstream to correct this issue

3.0 Presentation by Fisheries and Oceans Canada

Presentation attached as an appendix to these minutes

4.0 Presentation by Fraser Valley Regional District

Presentation attached as an appendix to these minutes

Discussion following the presentation was as follows:

- Issue of IPP's at Larson's Bench – an inventory of proposed IPPs within the watershed will be brought to a future meeting
- Traffic counter has been installed – will allow some indication of traffic volume, need for a gatehouse, recreational use and illegal dumping
- In January: 500 vehicles per hour; Doug assumes peak period usage is in the millions of persons
- Traffic counter will be maintained for one year then data will be assessed

- The gatehouse concept was used for the Columbia Valley and Cultus Lake – there are legal implications of this type of control structure on a provincial highway
- The counter is electronic and costly

5.0 Discussion of the Revised Terms of Reference

The revised Terms of Reference was presented and discussed. Comments included the following:

- The public is an identified stakeholder – where are they included?
- Public relations should start soon – a media release may be useful
- The public is critical when we get to the issues table – how do you present the process?
- Term ‘sustainability’ needs to be defined – reference provided by Sylvia from the Center of Indigenous Environmental Resources:

“Undertaking environmental, economic, and social activities in a manner that ensures local and global ecosystem structures and functions are able to maintain themselves in perpetuity.”

- The group felt that this definition was suitable and should be included in the next draft for further consideration – website should be referenced
- The question of how the TOR should be 'signed-off' and by whom was raised. There was discussion of potential formal sign-off procedures and also less formal ways to adopt the TOR.
- What is the hierarchy of flow (responsibility) – or who do we report to as a group?
- There should be a refrain from land use decision making and the reference to assisting decision makers within the Terms of Reference
- What is the scale of the issues that we wish to address?

Action Item One: The Terms of Reference will be revised to address the concerns expressed. This document will then be presented to each agency for acceptance

6.0 Group Exercise: Stakeholder Consultation Plan

The group as a whole brainstormed on ideas to incorporate into a stakeholder consultation plan. The following ideas were expressed:

- What is a stakeholder? – Anyone with an interest in the Chilliwack River could be defined as a stakeholder
- Ideas for engaging the public:
 - Mail-outs

- Bulletins
- Kiosk at Thompson Park
- Networking amongst agencies and groups
- Newspapers – media releases
- Website address included in all publications or outreach materials
- Fraser Valley Regional Watersheds Coalition network
- Newsletters of recreational and other user groups
- DND Environmental Coordinator – military contacts
- Steelhead Newspaper
- Radio and Cable Television
- Open Houses
- Free community listings
- Media relations
- Broad media releases in local newspapers (Times and Progress)
- Ratepayers Association newspapers
- Community events
- BC Parks/Regional Parks offices
- Fish Hatchery
- Fraser Valley Regional District Front Counter
- Ministry of Transportation front office
- Electronic survey – Needs Assessment for Atlas and Data – end user needs
- Use of educational facilities for networking – UCFV, BCIT, UBC

The following were ideas expressed to use in the development of the project website:

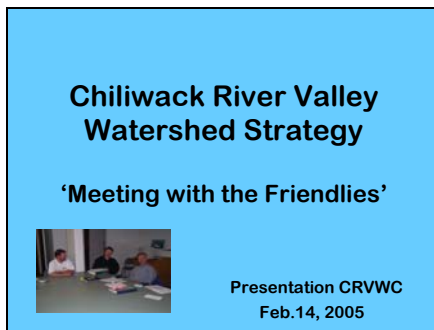
- Agendas and Minutes of meetings
- Mission of project
- Issues – method of two-way communication
 - Comment Forms
- Education – Narratives and Opportunity to add to
- Hyperlinks to key sites and/or documents
- Stewardship group profiles – activities
- Site specific project initiatives
- Agency responsibilities – links and guide
- Photographs – current and historic
- First Nation perspectives
- Written to plain language – easily understood
- Road map – orientation to the valley
- Air photos
- Mapping values – PDF maps, links to Community Mapping Network

Action Item Two: Develop a draft Communications/Consultation Plan for next meeting

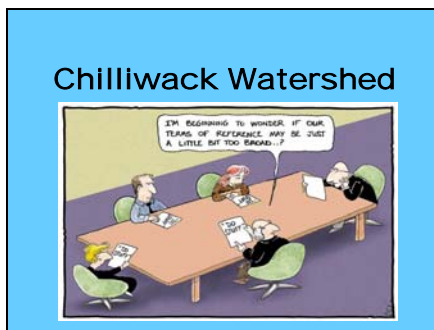
The next meeting will be held on
March 14th, 2005 at 1:00 p.m.
Fraser Valley Regional District
Cheam Boardroom

Appendix 1: Fisheries and Oceans Canada Presentation

Slide 1



Slide 2



Slide 3

Watershed Fish Sustainability
Planning Process

- Signed agreement by senior levels of federal and provincial governments in 1997
- Its purpose: to create a planning process in the Pacific region that shows levels of government and community 'working together to strengthen fish conservation issues'



Support money along the way


Slide 4

A WFSP Mission Statement

In 2003 the mission of WFSP was defined:
"Development of a coordinated federal-provincial support structure that guides and encourages local initiatives and partnerships in protecting and restoring fish habitat and populations on a watershed basis."

Slide 5

Regional Watershed Pilots




- Salmon River- Interior
- Henderson Lake-Vancouver Is.
- Chilliwack River- Fraser Valley

There were approximately 16 candidate rivers. The above were chosen for their particular unique qualities.

Slide 6

Chilliwack River ?



- Potential multi-stakeholder involvement.
- High profile/producer in Lower Fraser.
- Test for a complex watershed model.
- Pristine at Headwaters.
- Pressures increasing on the watershed.

Slide 7

Our Vision




Create a process that will:

- 1) Create common understanding of the Chilliwack Watershed.
- 2) Synthesize what we know about the Watershed with the multiple partners
- 3) Build an inclusive Roundtable to deal with gaps in science and issues on the watershed.

Slide 8

A Multi-faceted Plan



- Dynamic and Prescriptive!
- Transferable to other watersheds!
- Built on lessons learned!

Slide 9

Components- 2 Streams



- **Partnerships**
- Watershed Coordinator
- **Roundtable(FVRWC)**
- Communication Plan
- Technical Committee
- Knowledge Management Committee
- Website
- **Common document**
- UCFV

Slide 10

Lessons Learned- EPA

- 1) The Best Plans Have Clear Visions, Goals, and Action Items
- 2) Good Leaders are Committed and Empower Others
- 3) Having a Coordinator at the Watershed Level is Desirable
- 4) Environmental, Economic, and Social Values are Compatible
- 5) Plans Only Succeed if Implemented
- 6) Partnerships Equal Power
- 7) Good Tool Are Available
- 8) Measure, Communicate, and Account for Progress
- 9) Education and Involvement Drive Action
- 10) Build on Small Successes

Slide 11

Next Steps

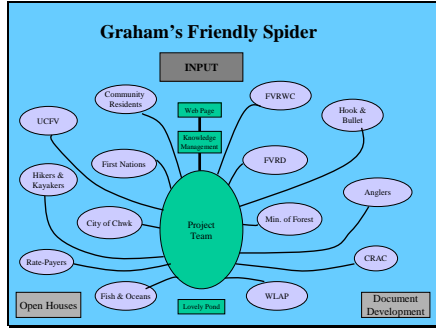
We don't have all the answers!

Were here to get your help and to listen!



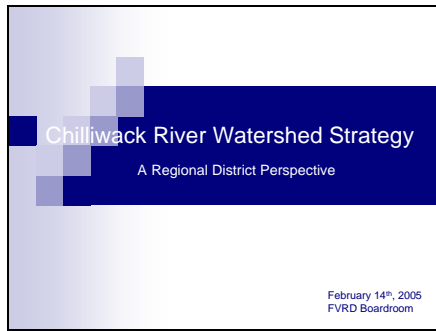
http://www.hcb.pac.dfo-wpo.gc.ca/publications/pdf/sustainability_planning_e.pdf

Slide 12



Appendix Two: Fraser Valley Regional District Presentation

Slide 1



Slide 2

CHILLIWACK RIVER WATERSHED STRATEGY

**Purposes of Regional Districts
(from the Local Government Act)**

Recognizing that regional districts are an independent, responsible and accountable order of government within their jurisdiction, the purposes of a regional district include:

- (a) providing good government for its community,
- (b) providing the services and other things that the board considers are necessary or desirable for all or part of its community,
- (c) providing for stewardship of the public assets of its community, and
- (d) fostering the current and future economic, social and environmental well-being of its community.

Slide 3

CHILLIWACK RIVER WATERSHED STRATEGY

Relevant clauses from the Community Charter:

Principles of regional district-provincial relations

2 (1) The citizens of British Columbia are best served when, in their relationship, regional districts and the Provincial government

- (a) acknowledge and respect the jurisdiction of each,
- (b) work towards harmonization of Provincial and regional district enactments, policies and programs, and
- (c) foster cooperative approaches to matters of mutual interest.

Slide 4

CHILLIWACK RIVER WATERSHED STRATEGY

What function does the FVRD have in the Chilliwack River Valley?

- **Regulates building and development**
 - Official Community Plan (long-range planning)
 - Zoning By-laws
 - Building Permits
 - Addresses geo-technical and flooding hazards
 - Sets standards
 - Riparian Areas Regulation (RAR)

Slide 5

CHILLIWACK RIVER WATERSHED STRATEGY

Other Regional Functions:

- Regional park and recreation management
- Tree removal by-law
- Emergency response planning
- Coordination and authority for select water works and flood mitigation works
- Coordination of volunteer fire services
- Flood and geotechnical hazard mitigation (a growing responsibility)
- Political representation for area residents

..... and a variety of other indirect services

Slide 6

CHILLIWACK RIVER WATERSHED STRATEGY

Why is the Regional District involved in watershed planning in the Chilliwack River Valley?


1. Responding to the desires of our residents
2. Recognition of the environmental and recreational values of the valley – critical salmon habitat
3. Long history of environmental hazards in the area
4. Recognized benefit of coordinating activities of agencies, First Nations and community partners
5. Anticipation that the role of local government is expanding and taking on new areas due to provincial downloading an integrated proactive approach to management in this area makes good sense

Slide 7

CHILLIWACK RIVER WATERSHED STRATEGY

and...

6. There are clear connections between the decisions of other agencies and community groups to the activities the regional district has responsibility for (ie. recreational use of area correlates with hatchery fish production, hazard management and forest practices)



Slide 8

CHILLIWACK RIVER WATERSHED STRATEGY

What does the FVRD bring to this process?

- experience with and representation of community needs
- understanding of hazards as they relate to the community
- practical ability to implement strategic direction as a result of this process
- variety of technical data and detailed mapping
- funding partner for the watershed coordinator position
